



THE BRIDGE CAMPAIGN

MAMAWI ATOSKETAN NATIVE SCHOOL

TAKING FIRST NATIONS TEENS TO HIGHER EDUCATION

GIFT CATALOGUE | 2016-17

CHARITABLE NUMBER: 10669-3047RR0001





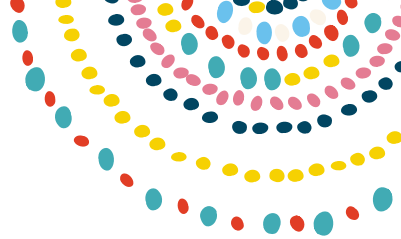
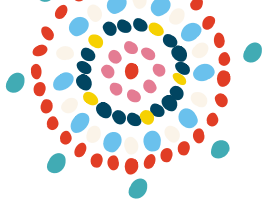
WHO WE ARE

Opened in 2003 to serve the four bands of the Maskwacis Cree Nation between Wetaskwin and Ponoka, Alberta, Mamawi Atosketan Native School (MANS) is a successful, privately-funded school that offers students a safe, caring and respectful environment that encourages them to understand and value their culture.

Only 39% of First Nations students who register for high school finish. Without a high school diploma, their options are severely limited.

That's why MANS is extending its unique elementary and junior high through to high school—to help promising students stay on track through the years when Maskwacis youth are most likely to drop out of school.

We can already see positive change. We invite you to be a part of it.



INDEX

- 4 INDUSTRIAL ARTS & TECHNOLOGY
- 10 AFTER SCHOOL PROGRAM
- 14 SCIENCE LAB
- 16 NATIVE CULTURAL STUDIES
- 18 CLASSROOMS
- 20 HOME ECONOMICS
- 22 THE BIG PICTURE





INDUSTRIAL ARTS & TECHNOLOGY

What happens in the industrial arts center goes beyond engineering and construction. When MANS students learn how to fuse two pieces of metal, they're building even more than a marketable skill set—they're building character.

Taking on a challenging project helps instill patience, persistence and follow through—qualities that will help students through tumultuous adolescence in junior high onto solid ground and a high school diploma.

We know that student interest in welding is high. Donating to Career and Technology Studies will allow students to receive practical career training and exposure, providing motivation for many to graduate high school to get to apprenticeships.



1) Miller Multimatic 3-in-1 Welder (3 x \$2,400)

\$7,200

The Miller Multimatic 3-in-1 Welder is an all-in-one, portable, multi-process power source. Weighing only 29 pounds (13.2 kg) and running on either 120 or 240 V, the Multimatic 200 can go anywhere you need to MIG, TIG or Stick weld.



2) Miller Spectrum 375 X-TREME Plasma Cutter

\$2,000

The Miller Spectrum 375 X-TREME Plasma Cutter will achieve a steady, precise cut. Its unique no-slip grip, thumb guide and finger contours help prevent operator fatigue while the flexible cable makes maneuvering easy.



3) 6' x 6' Work Tables with 1/4" Steel Tops

\$4,000

Materials only. This will be the first student project in the new Industrial Arts Building.



4) Floor Stand Drill Press **\$1,000**

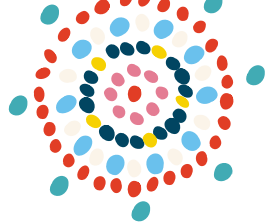
This heavy-duty floor model drill press with 12 speeds and powerful 3/4 HP motor is a mainstay in any shop. Features crank handle operated rack and vertical table movement, cushioned grip quill handles, built-in light, and the table has lock levers. A very popular machine!



5) Dust Collection System **\$2,000**

Every workshop or large industrial space needs to pay close attention to air quality; having an efficient arsenal of baghouse dust collectors is important to students and teachers alike. Busy Bee stocks all types of dust collection systems that will effectively accomplish saw dust collection, as well as removal of various types of industrial debris.





6) 6 x 6 Work Tables with 1/4" Hardwood Tops \$3,000

Materials only. This will be the first student Project in the new Industrial Arts Building.

7) 7 x 12 Metal Bandsaw \$1,100

- Powerful 1 HP motor
- Automatic shut-off
- Can be used horizontally or vertically
- Adjustable ball bearing guides
- Portable design for easy movement



8) Oxy/Acet Torch Set (3 x 650)

\$1,950

Oxy-fuel is one of the oldest welding processes. Oxy-fuel has an advantage over electric welding and cutting processes in situations where accessing electricity (e.g., via an extension cord or portable generator) would present difficulties; it is more self-contained, and, hence, often more portable.





9) Disc/Belt Sander

\$500

Powered with a 3/4 HP motor this belt and disc sander is designed for versatility and performance. The 6" x 48" sanding belt operates horizontally, vertically, or any angle in between. Belt changing, tensioning and tracking all feature a quick release lever. The ON/OFF switch on CT174 features a removable locking pin and the unit features two 2-1/2" dust ports for dust removal and a sturdy steel storage stand.



10) 14" Band Saw (3 x \$1,200)

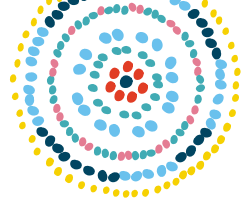
\$3,600

This band saw features a deluxe dual-position rip fence system, a cast-iron frame and precision-balanced aluminum wheels with replaceable rubber tires and two cutting speeds for excellent results in either hard or soft woods.

11) Thickness Planer

\$900

Ideal for student projects, the RIDGID 13 inch Thickness Planer with 3-Blade Cutter head leaves a smooth, blemish free surface that makes final finishing easier.



12) Table Saw

\$2,000

This heavy duty left tilt Cabinet Table Saw features a cast iron trunnion and a precision cam lever fence for all day ripping. Equipped with a riving knife, new CSA approved safety push stick, and a magnetic switch to add safety & precision to your shop. Like all CX-Series machines, this unit features powder coated paint, sharp looking two tone colours and a full 3 year warranty.

13) 80 Gallon Air Compressor

\$2,000

The Ingersoll Rand 80 Gallon, electric-driven two-stage air compressor is designed to provide continuous power. Built to last, this durable workhorse is designed for heavy shop or industrial use. It provides the reliability and performance that are ideal for most applications and users.



AFTER SCHOOL PROGRAM

The After School Program has proven to be excellent at helping students gain confidence through sports and other skilled activities. It has also been successful at keeping students in a safe, caring atmosphere during a critical time of day when they are most likely to be exposed to gangs. Donating to the After School Program means helping students build up their self-esteem while also creating a near-ideal environment for keeping students on track to graduate from high school.





14) League Fees

\$500

This is a onetime fee that is paid for each sport every year.

15) Warm up Hoodies (30 x \$45)

\$1,350

A team uniform helps foster team spirit. Colorfastness and minimal shrinkage mean that our custom MANS sweatshirts will retain their look and fit for seasons to come.



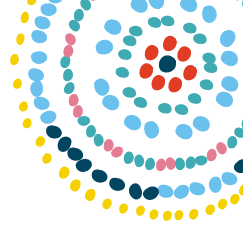


16) After School Transportation

\$5,000

Most Maskwacis families would be hard-pressed to drive their children to and from after school programs on a daily basis, so transportation is provided for those who participate. Because MANS is an independent off-reserve school, it receives no funding from any level of government.





17) Tournament Fees

\$1,500

Participating in tournaments builds confidence and bolsters team spirit. For each game there is a \$50 fee.

18) Coach

\$3,000

We want to respect our coaches and not take their time for granted. This will enable us to express our appreciation for the time they spend challenging us to achieve more as a team than we dared dream possible.





SCIENCE LAB

To succeed in any culture, the Cree youth of Maskwacis need a complete high school experience—one that teaches not only Alberta university track courses, but also allows them to consider new options and outcomes. The Science Lab is destined to become a place of discovery and learning. These classes will not only help students become equipped to enter university, they will also change the futures of more Reserve teens by exposing them to new career paths. Donating to the Science Lab means empowering students to choose their futures and effect positive change in their communities and elsewhere.

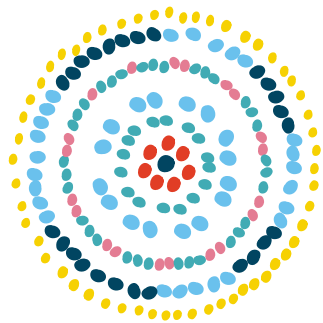


19) Student Workstations

(6 x \$5,740) \$34,440

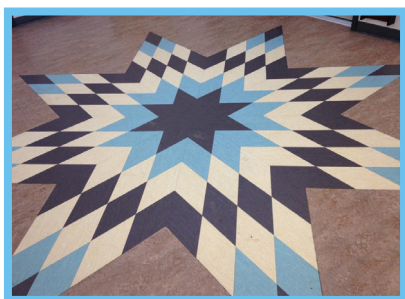
20) Storage Cabinet

(3 x \$755) \$2,265



NATIVE CULTURAL STUDIES

When asked what was most important to them about their experience at Mamawi Atosketan Native School, many alumni say, “My culture.” At MANS, Cree culture is taught, respected and celebrated. This environment plays an even greater role in the Native Cultural Studies Room than the other classrooms. Here, students will experience traditional symbols, music, stories and language. The Native Cultural Studies Room is sure to become a focal point and favorite place.





21) Performance and Travel

\$500

Involvement in Total Praise and trips to BC Campmeeting give students the chance to interact with people and other aboriginal communities in a positive setting. It's an important part of a MANS education. Send MANS' ambassadors to a new community--or perhaps your own!

22) Hand Drums and Drum Sticks

\$1,000

Music is an integral part of the Native Cultural Studies curriculum. Drums are made with hand-steamed white ash frames and wild deer and moose hides. A maple drumstick is included with each drum.

23) North Star Floor Pattern

\$1,000

The North Star pattern is a meaningful one to the Cree, and it is hoped that it or another culturally meaningful pattern can be incorporated into the floor of the classroom to inspire and remind students of the strength of their artistic roots.





CLASSROOMS

Remaining focused through high school is a challenge for most teens. Statistics have shown that this is especially true for youth on Reserves. Part of the MANS mission is to help its students at every grade level overcome the difficulties of staying focused. Donating to our classrooms and making sure that they are equipped with up-to-date, cutting edge technology like iMac Computers and Smart Boards demonstrates to every student a clear confidence in their potential to become effective leaders and participants in traditional, professional, and world communities—making a tremendous difference in the life path they choose.



23) Smart Board (9 x \$3,500)

\$31,500

The Smart Board is an interactive whiteboard that uses touch detection—a very popular teaching tool that allows students to work with large amounts of information and engage in active collaboration.

24) iMac Laptop Computers (14 x \$1,800)

\$25,200

iMac Laptop computers are an incredibly usefull teaching tool, having one in every classroom and office will help facilitate coordination and communication between teachers, staff and the larger MANS community.

25) Computer Lab Equipment (25 x \$1,800)

\$45,000

The iMac computer lab offers MANS students exposure to the same technology they will encounter in university. Knowing how to use these tools for learning is a key factor in their success at MANS and beyond.





HOME ECONOMICS

The Home Economics class will offer students a hands-on learning experience that will equip them with practical skills. Featuring two work areas, one “domestic” in its equipment and one commercial, the Home Economics Room will serve a variety of purposes. In the domestic kitchen, students will learn basic cooking while the commercial kitchen area will provide service for larger school events. It will also provide a facility that could offer students commercial food service experience and instruction. Perhaps most importantly, it will allow students and staff to feed the growing student body so that the children will have the fuel they need to thrive academically.



26)	Sewing Machines (10 x \$200)	\$2,000
27)	Commercial dishwasher	\$15,000
28)	Oven	\$8,000
29)	Range with ovens	\$10,000
30)	Fridge	\$2,500
31)	Range hood	\$3,000
32)	Stainless steel washing area	\$5,000
33)	Stainless steel island counter	\$2,000
34)	Mixer	\$600
35)	Misc. pots and equipment	\$3,900
36)	Feed one student for a year	\$250



37) Scholarships

\$10,000 per year

Scholarships may be designated to a specific school (Burman University, for example) or they may be made available for students to use at any educational institution. If a minimum four year commitment is made, the scholarship can be named to honor an individual or be given an inspirational title like “The Diligence Scholarship.”

MANS: THE BIG PICTURE

For more information on contributing to these areas of the school, please call (403) 342-5044 ext. 233 or email lmcdowell@albertaadventist.ca

38) Teaching Assistant Room

\$25,000

39) Cree Culture Centre

\$150,000

40) Campus Drive

\$150,000

41) Library Media Centre

\$250,000

44) Automotives (Industrial Arts)

\$350,000

45) Construction (Industrial Arts)

\$350,000

In the event that the need for a selected gift has already been filled or is no longer practical or desirable, the Alberta Conference, in consultation with the board of Mamawi Atosketan Native School, will use the donation for a purpose consistent with the original spirit and general intent of the gift.



Payment Information

Enclosed is a cheque/money order for \$ _____

(Make cheque/money order payable to Mamawi Atosketan Native School and in the memo line mark for The Bridge Campaign)

OR Please charge my Credit card:

☐ Visa ☐ Mastercard ☐ Amex Card

#: _____ Expiry: _____

Signature: _____

Name on Card: _____

Gift goes toward item #: _____

To order gifts call: (403) 342-5044 ext. 233 Online: www.mans1.ca

Personal Information

Title (circle one): Mr. Mrs. Ms. Dr.

First name: _____

Surname: _____

Address: _____ City: _____

Prov.: _____ Postal Code: _____ Phone: _____

Email: _____

Please add me to your email list ☐



The Bridge Campaign
5816 Highway 2A
Lacombe, AB T4L 2G5

BE PART OF THE BRIDGE TO CHANGE THE FUTURE

Please contact:

Lynn McDowell, Campaign Manager
(403) 342-5044 ext. 233
lmcdowell@albertaadventist.ca

Warren Kay, Congregation Liason
(403) 302-9292
wkay@albertaadventist.ca

OR Send Cheque/Money Order to:
The Bridge Campaign
5816 Highway 2A
Lacombe, AB T4L 2G5

